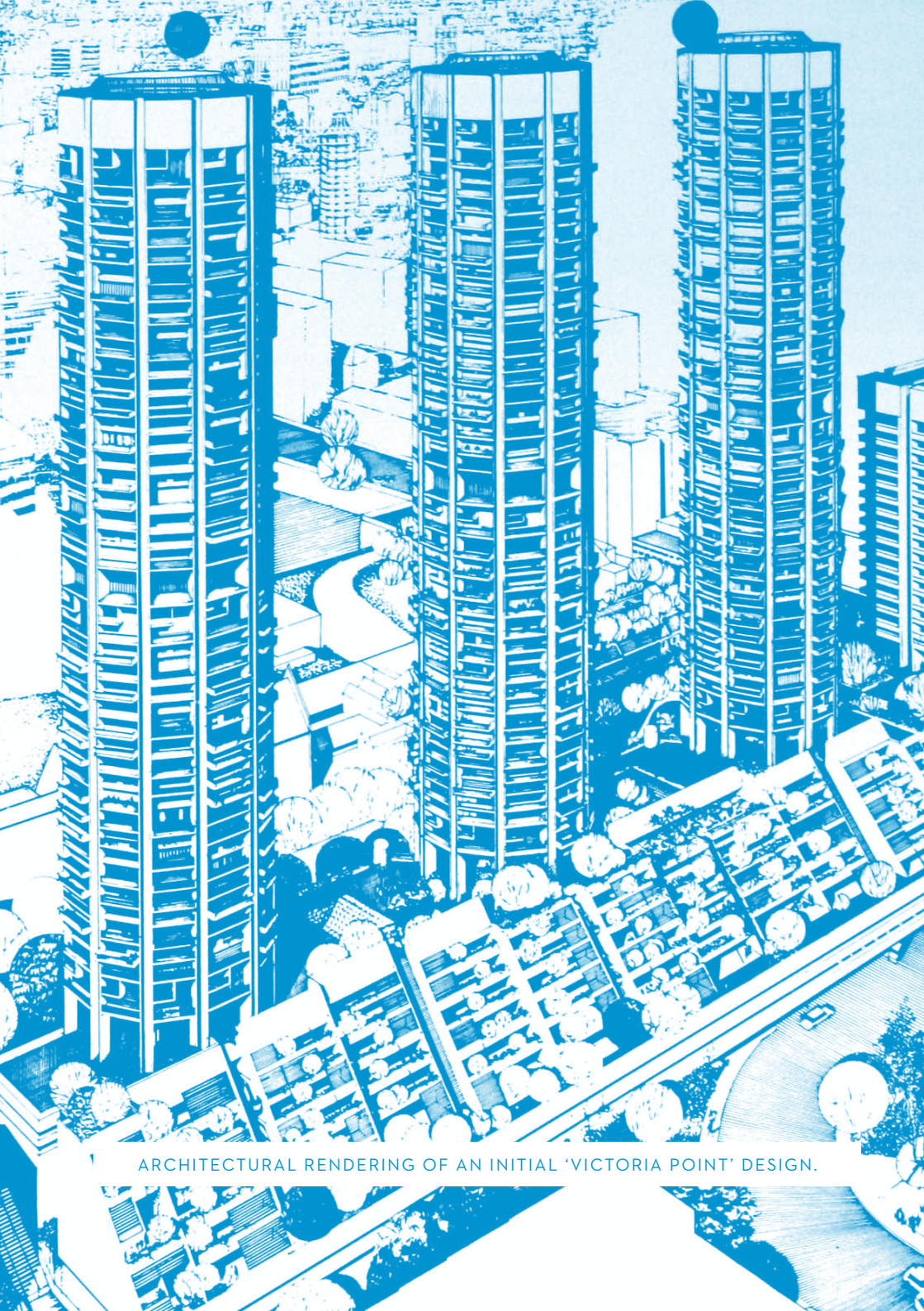




# GREEN BANS ART WALK

40 YEARS OF COMMUNITY  
& UNION ACTION, 1971–2011





ARCHITECTURAL RENDERING OF AN INITIAL 'VICTORIA POINT' DESIGN.

## GREEN BANS ART WALK

---

*"The Mundeyes and the Pringles and the Owens and the rank-and-file have effected one of those rare shifts in public thinking that occurs only a few times in a lifetime. Maybe they were mad hatters and larrikins - a true Australian tradition - but, by God, there's many a Sydney resident who will remember them with love."*

Marion Hardman and Peter Manning, *Green Bans. The Story of an Australian Phenomenon*, Australian Conservation Foundation, 1975.

---

For four years Green Bans inspired a nation and the world. The NSW Builders Labourers Federation responded to a last resort plea for help from the Battlers for Kelly's Bush to save remnant harbour bush. "We are builders labourers", said secretary Jack Munday; "not mere builders labourers" as Premier Robert Askin, the establishment, media and hot money jeered.

From 1971, thousands of builders labourers voted on over 40 requests for bans from resident groups, the National Trust and/or the Institute of Architects. They voted for a big picture: to keep urban low cost housing and to protect the environment and heritage. Environmental green bans were not negotiable; built green Bans were negotiable. They crusaded for safety reforms on building sites and wider social issues, such as feminism, gay and black rights, and the impact of international politics.

The BLF leaders were disciplined and educated by the workers' education system and the New Left of the Communist Party. They led a coalition of working class residents, seamen, conservationists, lecturers, artists and musicians, public servants and libertarians to fight government plans to redevelop urban low-cost housing into commercial developments or freeways. In Victoria Street after a brutal struggle, low-cost housing was lost with some heritage gain. Juanita Nielsen was murdered in mid-1975 and Mick Fowler, the other key leader, died an untimely death.

# GREEN BANS ART MAP: VICTORIA ST & WOOLLOOMOOLOO

---

In Woolloomooloo the Labor Party promised to 'Save the 'Loo' and won Federal government in December 1972. This led to a visionary medium density workers' housing project embracing renewal and new designs.

Having a say in the city of the future created a planning system revolution, then changed institutions and laws. They set standards around the world. The state BLF leadership paid dearly. The Federal BLF who saw a greater future working in cooperation with developers ousted them. The union was de-registered and the leadership denied the right to work in their industry.

The Green Bans Art Walk re-activates the fine detail of the historic pathways and disconnected walks through the heart of the 'Loo. On the city side of Victoria Street a network of heritage-listed stairs down the sandstone cliff links to laneways crossing the Woolloomooloo basin east to west. The Walk symbolically re-unifies a beautiful area disconnected by rail and freeway structures, ugly site consolidations and looming high-rise.

We propose on-going walking routes, new signage and lighting, restoring existing and adding new Green Plaques, restoring and adding new artworks (and a statue to Jack Munday) and a 'linear park' to create a peoples museum emphasising the area's residential character. Designation as a special area ensures that the planning system protects significance and character and this is passed on to future generations. We hope to help put low-cost urban housing back on top of the action list. Each walk seeks your ideas and responses.

---

Jo Holder  
For *Green Bans Art Walk*  
July 2011

## WALK 1

The Cross Art Projects to First Draft Depot (easy walk)

## WALK 2

First Draft Depot to The Cross Art Projects (medium walk)

## START 1

The Cross Art Projects, 8 Llanekelly Lane, Kings Cross: *Green Bans Art Walk* Exhibition with Fiona MacDonald, Diego Bonetto and historical work by Margaret Grafton, Pat Fiske and Joseph Szabo.

## START 2

First Draft Depot & Big Fag Press, 13-17 Riley St, Woolloomooloo: *Green Bans Art Walk* Exhibition with Marion Morrison, Michele Blakeney, Pat Armstrong, Mini Graff, Mickie Quick and historical work by Josie Cavallaro and Anne Kay, Alan Davies and Pat Fiske.

## VICTORIA STREET GREEN BAN

- 1 115 Victoria Street
- 2 55-115 Victoria Street, 2/30 Brougham St and Hordern's Place

- 3 202 Victoria Street

- 4 Butler Steps Plaque

## BUTLER STEPS TO BROUGHAM ST

- 5 Rowena Place (off Brougham Street)

- 6 St Columbkilles Church

- 7 Townhouses, 79-85 Brougham Street

## WOOLLOOMOOLOO PLAYGROUND, SYDNEY PLACE AND DOWLING STREET

- 8 Woolloomooloo Playground and Wall Art

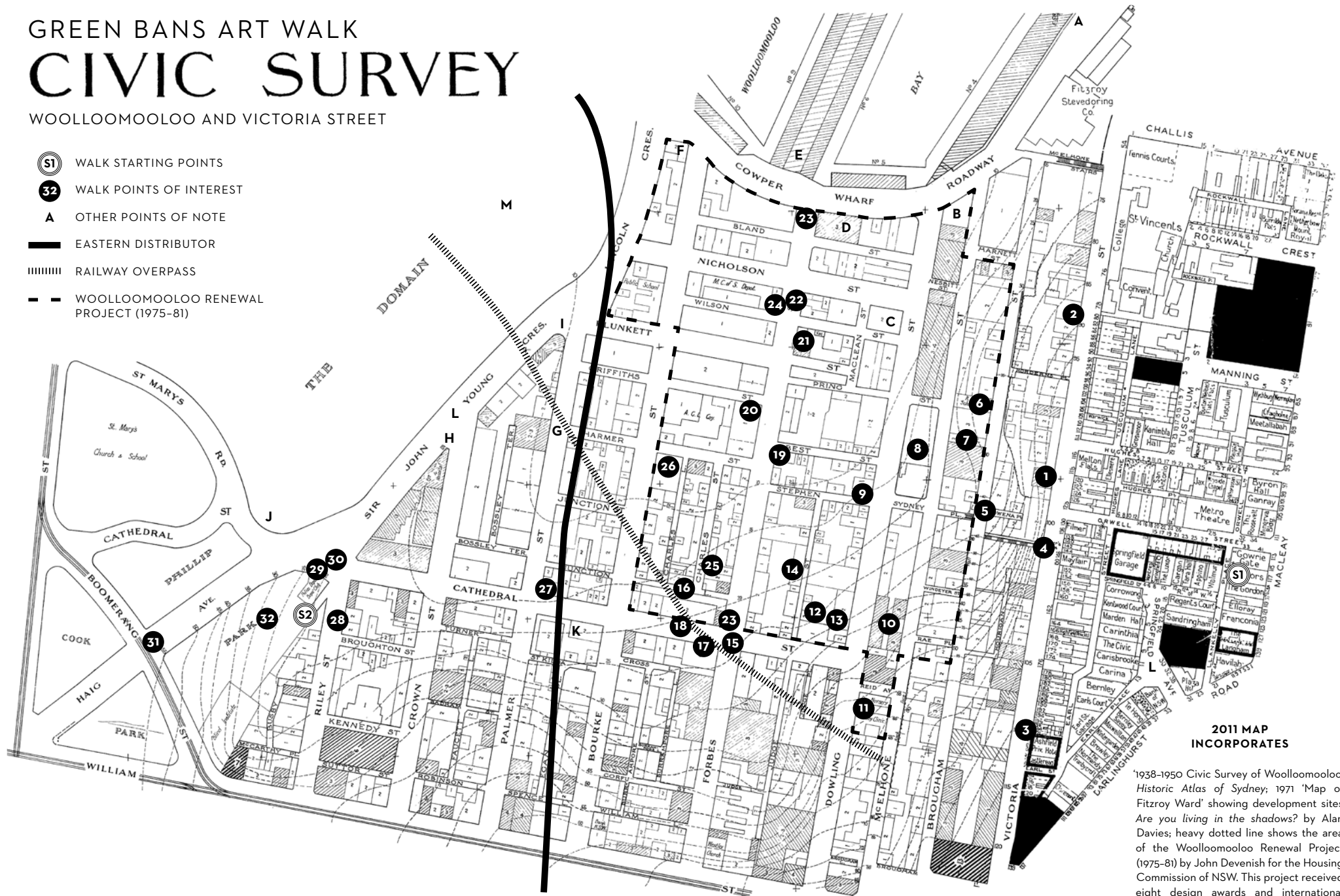
- 9 Tea House, 71 Dowling Street

- 10 Workmen's Houses at 70 Dowling Street

# GREEN BANS ART WALK CIVIC SURVEY

WOOLLOOMOOLOO AND VICTORIA STREET

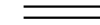
- (S1)** WALK STARTING POINTS
- (32)** WALK POINTS OF INTEREST
- A** OTHER POINTS OF NOTE
- EASTERN DISTRIBUTOR
- |||||** RAILWAY OVERPASS
- - -** WOOLLOOMOOLOO RENEWAL PROJECT (1975-81)



**2011 MAP  
INCORPORATES**

'1938-1950 Civic Survey of Woolloomooloo',  
Historic Atlas of Sydney; 1971 'Map of  
Fitzroy Ward' showing development sites,  
*Are you living in the shadows?* by Alan  
Davies; heavy dotted line shows the area  
of the Woolloomooloo Renewal Project  
(1975-81) by John Devenish for the Housing  
Commission of NSW. This project received  
eight design awards and international  
acclaim for community consultation.

## ALSO OF NOTE



- 11** Kindergarten Union, Dowling Street, former container garden and murals

### DENIS WINSTON PLACE (OFF JUDGE STREET)

- 12** Denis Winston Place

- 13** Margel Hinder, 'Aphrodite', bronze sculpture with fountain

- 14** 11-31 Judge Street

### WOOLLOOMOOLOO GREEN BAN: FORBES AND CATHEDRAL STREET/TOM UREN SQUARE

- 15** Giant Kurrajong, the 'Tree of Knowledge'

- 16** Tom Uren Place Plaque

- 17** Green Bans Murals

- 18** Linear Park Proposal

### FORBES STREET

- 19** 70 Forbes Street, Architecture Plaque

- 20** 41-47 Forbes Street

- 21** 36 Forbes Street, Architecture Plaque

- 22** Forbes Street Architecture Plaque

- 23** Red Post Office Boxes, Forbes Street

### WHARFIES SQUARE AT NICHOLSON & FORBES STREETS & WOOLLOOMOOLOO WHARF

- 24** Wharfies Square

- 25** 38-40 Charles Street, Inhibodress Gallery

- 26** Nellie Stewart Square

- 27** WOOL / LOO / MOO / LOO Guerrilla Garden

- 28** 6 & 8 Riley Street, terrace houses

- 29** PCYC and Australian Youth Mural

- 30** Sylvia Chase Square outside PCYC

- 31** Boomerang Street

- 32** Anita Aarons, reclining figure, playground sculpture

- A** Memorial Sculpture on Cowper Wharf Road

- B** Contaminated former service station site

- C** Juanita Neilson Community Centre

- D** Gunnery, Cowper Wharf Road

- E** The Finger Wharf

- F** Pubs

- G** People's Parks and Matthew Talbot Hostel for Men

- H** Sir John Young Crescent: Sydney Coffee Palace / former Eye Hospital (now backpackers)

- I** John Passmore Gallery – the former Merryfield Hotel

- J** Women and The Arts Festival Mural, on the Domain Carpark, St Mary's Road

- K** Not Forgotten – St Kilda mansion whose demolition inspired the first resident uprising in the late 1950s and St Kilda Lane

- L** Most Mysterious – missing plaques in Sir John Young Cresc to Robert Louis Stevenson and Tilly Devine who lived here; missing statue of Diana the Huntress with Dog, from Springfield Avenue

- M** Art & Memorials in the Royal Botanic Garden and the Domain, adjoins Green Bans Map



**GREEN BANS  
ART WALK AND  
EXHIBITION  
6-27 AUGUST 2011**

40th anniversary of the  
Green Bans, 1971-2011

**JO HOLDER**

The Cross Art Projects  
[crossartprojects.com.au](http://crossartprojects.com.au)  
Research and writing

**PAT ARMSTRONG**

[somnambulist.org](http://somnambulist.org)  
Design and typesetting

**BIG FAG  
PRESS**

[bigfagpress.org](http://bigfagpress.org)  
Map printing

**BLOOD & THUNDER**

[bloodandthunder.com.au](http://bloodandthunder.com.au)  
Booklet printing



JACK MUNDEY IS CARRIED AWAY BY POLICE.

